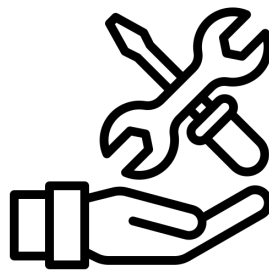
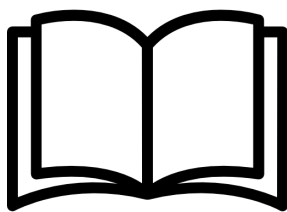




by **EFICAD**

SWOOD



Installation and activation

Table of contents

SWOOD INSTALLATION AND ACTIVATION	1
EFICAD.....	1
I. INSTALLATION AND ACTIVATION OF ADD-INS.....	3
1. REQUIRED CONFIGURATION	3
2. UNINSTALL BEFORE ANNUAL VERSION CHANGING	3
a. <i>License(s) transfer</i>	3
b. <i>Uninstall</i>	3
3. ADD-INS INSTALLATION.....	4
a. <i>Installation from the DVD or download link</i>	4
b. <i>Installation procedure</i>	4
c. <i>Enabling fixe user licenses: starting by 3010</i>	4
d. <i>Allow access to the activation server</i>	6
II. SWOOD AND SOLIDWORKS.....	7
1. FULL INTEGRATION OF SWOOD INTO SOLIDWORKS	7
2. FIRST USE & SELECT <USER DIRECTORY> (SWOODDATA)	8
3. PREREQUISITES IN SOLIDWORKS.....	8
a. <i>Views management</i>	8
b. <i>Large assemblies</i>	9
c. <i>Materials and textures</i>	9
d. <i>Dynamic highlight from graphic view</i>	9
III. ADDITIONAL INFORMATION	10
CONTACTS:	10
WEB:	10

I. INSTALLATION AND ACTIVATION OF ADD-INS

1. Required Configuration

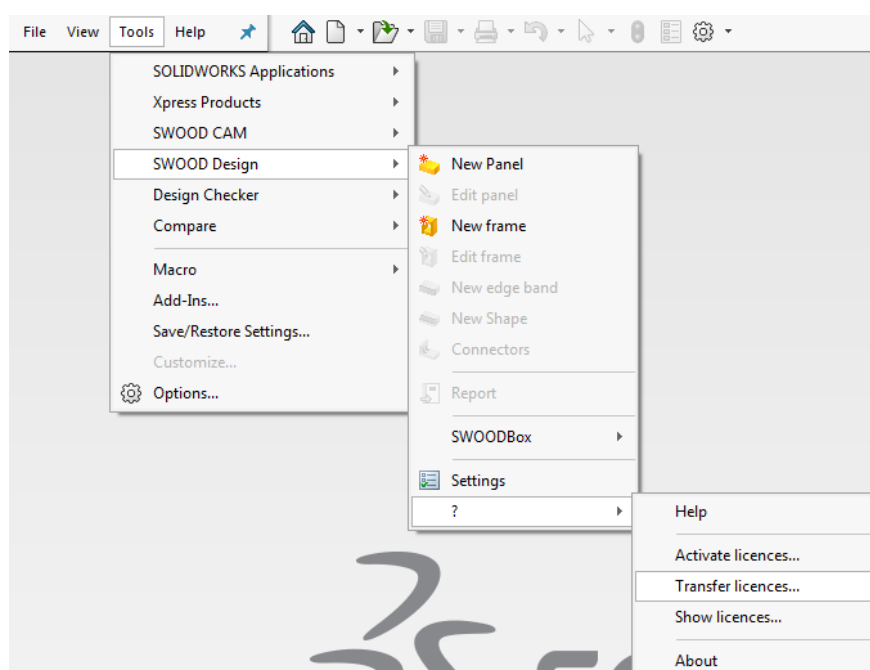
- Compatibility is effective for 2 years between the Solidworks and SWOOD versions (Example : SWOOD 2019 will be compatible from Solidworks 2017 SP5 to Solidworks 2019).
- Operating systems: Windows 7 (Professional, Ultimate or Business), Windows 8 (Professional, Ultimate or Business) 64 bits, or Windows 10 (Professional, Ultimate or Business) 64 bits.
- A graphic card certified by SOLIDWORKS (look at the following link : <http://www.SOLIDWORKS.fr/sw/support/videocardtesting.html>).
- 8 Go de memory Ram minimum.
- A screen resolution of 1280x1024 at less.
- 5 Go available including 1 Go on the C hard disk.

2. Uninstall before annual version changing

a. License(s) transfer

In the case of switching from an earlier version of SWOOD, it is necessary to transfer the old licenses.

- For each Add-Ins installed (SWOOD Design and SWOOD CAM) go to the "**Tools\ SWOOD CAM \ ? \ Transfer Licenses** "and "**Tools\ SWOOD Design \ ? \ Transfer Licenses** ".
- Once the license transfer is made for Add-Ins, close SOLIDWORKS and go to the "Uninstall" section.



b. Uninstall

To remove the SWOOD add-in, use the Add-Remove Programs option in the Windows Control Panel. The content of the user folder will not be affected. So, the personalization and libraries will be found completely.

3. Add-Ins installation

a. Installation from the DVD or download link

- The Add-In must be installed locally with all Administrator privileges, the user account settings must be at the lowest level (Never notify me) and no protection system (Antivirus) should be enabled or in analyze process.
- Users must have read-write permission to the user folder (C:\Users\"session name"\Documents\SWOODData by default), in all subfolders and in the registry table. Registration of the add-in must be done by the network administrator. He must perform the first use of the software, himself.

b. Installation procedure

- Place the CD in the player. The installation will start automatically. If not, launch the Windows Explorer and display the contents of the CD. Start the installation by double clicking on the file SETUP.EXE.
- Read and accept the license agreement.
- Fill the company name
- Choose the Add-In to install

c. Enabling fixe user licenses: starting by 3010

- Launch SOLIDWORKS and activate your Add-Ins using your serial numbers and email address. There are 2 possibilities to activate your products, automatically by Internet or manually by email.



Activer / transférer votre produit SWOOD Design



Activer

Votre licence peut être transféré que si vous voulez changer votre matériel ou déplacer votre logiciel sur un autre ordinateur.

SWOOD Design

Comment voulez vous activer / transférer ?

automatiquement par internet (recommandé)

Manuellement par email

Numéro de série

XXXX XXXX XXXX XXXX XXXX XXXX

Coordonnées(requis)

Courrier xxxxx@xxxx.com

< Précédent Suivant > Ignorer Aide

- Sometimes the sending of an activation request is blocked (*firewall/server/proxy*), it is then necessary to activate the product by email.
 - Select "**manually by email**" and click "**Next**" to save the activation request.
 - Send the file saved by email to activation@eficad.com.
 - Wait for the return response of the **Response.xml** response file and load the file with the "**Open**" button. Then **repeat the operation a second time** if it is the first activation of the station.

Activation manuelle



1) Appuyer sur Sauvegarder pour créer une requête d'activation :

Sauvegarder...

2) Envoyer le fichier à l'adresse suivante pour obtenir un fichier réponse

activation@eficad.com

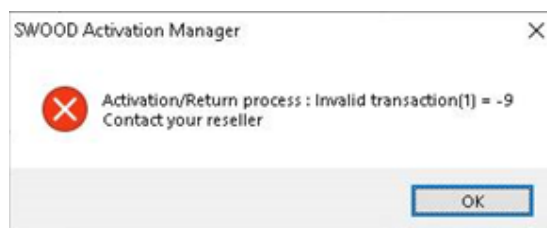
3) Appuyez sur Ouvrir pour charger un fichier de réponse :

Ouvrir...

Une fois que vous avez lu le fichier de réponse, appuyer sur suivant pour continuer. Vous pouvez également appuyer sur Annuler et exécuter cet assistant plus tard.

< Précédent Suivant > Ignorer Aide

- During the 1st activation of SWOOD on a computer or during an update of SWOOD through year versions, you may have a message like the one below the ID can be different [-3, -5, -9]:



In this case, do not hesitate and try again the activation at least 2 more times.

d. Allow access to the activation server

In the case where the computer configuration prohibits access to the activation server (*message "Cannot connect to the activation server"*), two solutions may be possible.

- **Solution 1:** Create an exception in the firewall for the IP address 82.127.168.94 corresponding to the domain activation@eficad.com.
- **Solution 2:** Add the hostname in the DNS server (Example with the following link: <http://helpdeskgeek.com/windows-7/windows-7-hosts-file/>)

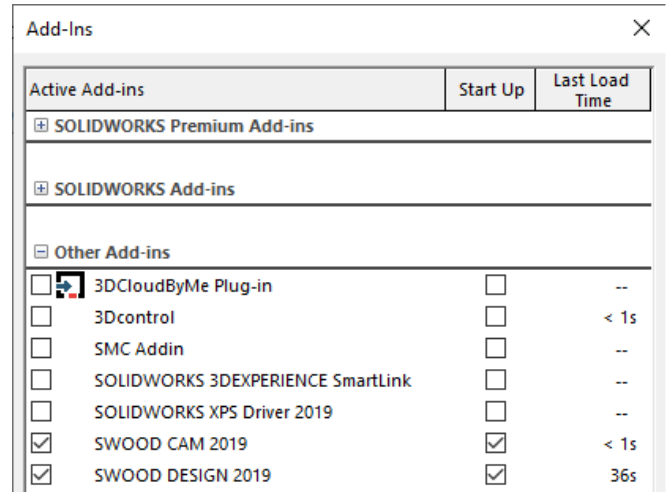
II. SWOOD and SOLIDWORKS

1. Full integration of SWOOD into SOLIDWORKS

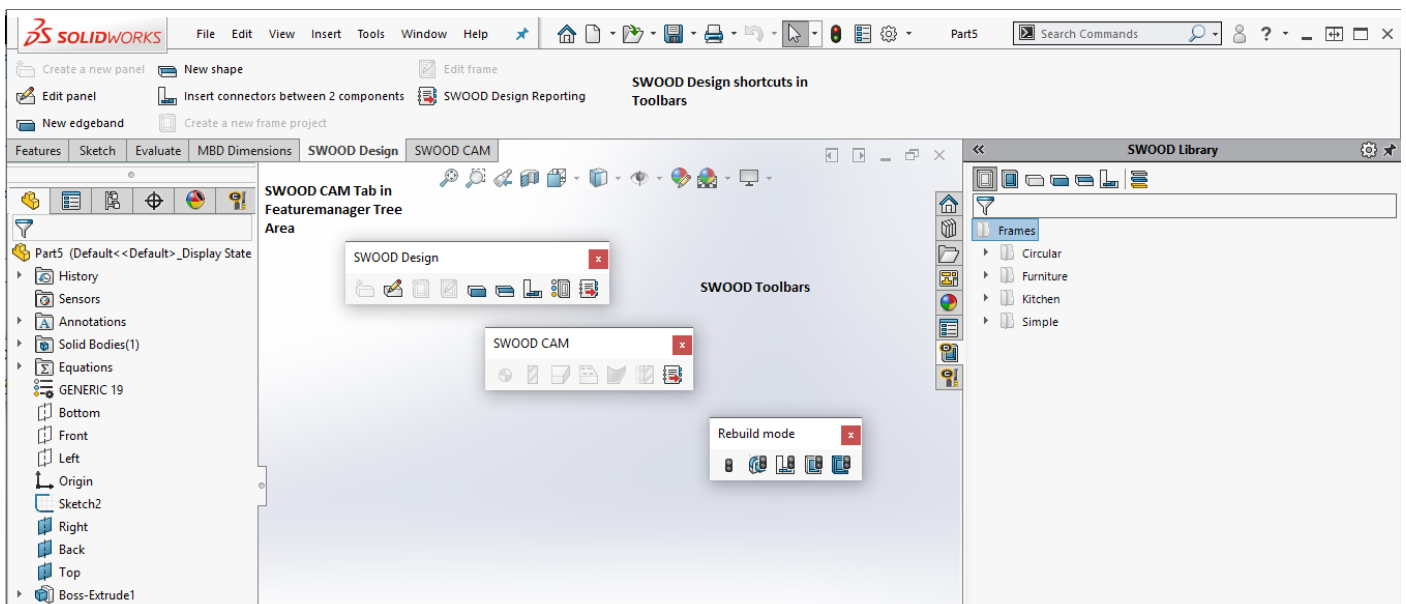
SWOOD Design and SWOOD CAM are fully integrated in SOLIDWORKS. They are used as Add-Ins of the software in the same way as SOLIDWORKS Add-Ins (photoview, SOLIDWORKS Toolbox, ...). Their activations and deactivations are possible in the same way using the Options menu.

The activation is identical to that of the add-ons, namely:

- If checked on the left, activate in the current session of SOLIDWORKS.
- If checked on the right, permanent complement activation.

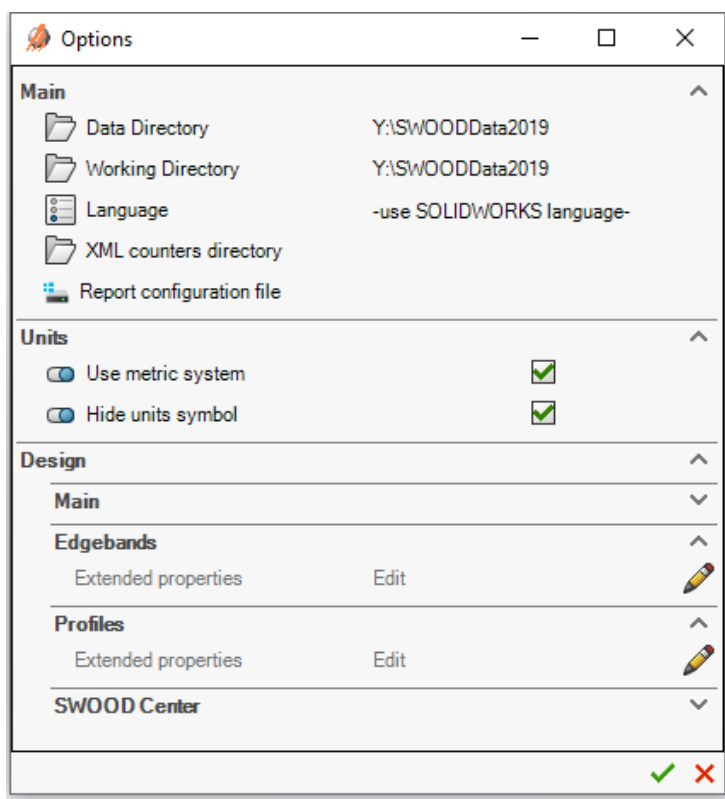


Thanks to the integration of SWOOD into SOLIDWORKS, the accessibility of its functions in different menus and libraries is identical to those of SOLIDWORKS.



2. First Use & Select <User Directory> (SWOODData)

The data directory (SWOODData) contains your libraries. It saves your design data (SWOOD Design library, SWOODBox, Connections, Materials ...) and machining (SWOODCAM libraries of Tools, Aggregates, Machining Entities). The selection is made by browsing and selecting the folder containing the library of your SWOOD products.



3. Prerequisites in SOLIDWORKS

To achieve immediate compatibility between SWOOD and SOLIDWORKS, some SOLIDWORKS options must be checked after the SWOOD user is created.

a. Views management

The basic coordinate system of SOLIDWORKS is such that the Face view is oriented towards the positive Z. In furniture management, SWOOD guides the height of the furniture in this view. So, the best is to change the standard views so that the Face view becomes the Top view. To do this, use the Update Standard Views command in the Orientation window (accessible via the Space key on the keyboard).

b. Large assemblies

If an assembly contains many parts, it can be considered as a large assembly. Its components will be put in lite mode (*no editable functions*). However, the SWOOD functions must be editable during the project design. You can then modify the quantity of parts so that the assembly is no longer considered complex in SOLIDWORKS options → Tools → Options → Assemblies.

c. Materials and textures

When creating materials, SWOOD material is combined with a SOLIDWORKS material. The SWOOD Materials database must be added to the SOLIDWORKS material databases. To do this, check that the <DataDirectory>\ SWOODData \SWOODDesign\Materials folder is present in the SOLIDWORKS Materials Databases list (*Tools → Options → File Location → Material Databases*).

A texture can also be associated with the SWOOD material. That's why it's necessary to verify that the SWOOD textures folder (<data_directory>\SWOODData\SWOODDesign\Materials\Textures) is also declared as SOLIDWORKS textures folder → Tools → Options → File location → Textures).

d. Dynamic highlight from graphic view

To use SWOOD Design drag and drop functions, the option "Dynamic highlight from graphic view" must be active in the SOLIDWORKS options. To do this, check that the option is checked in *Tools → Options → Display / Selection → Dynamic highlight from graphic view*.

III. Additional Information

Contacts:

Technical support department

E-mail: support@eficad.com

EFICAD

Espace H2O
55 avenue de Melgueil
34280 La Grande Motte
France

Tél. (33) 04 67 63 72 65
Fax : (33) 04 99 62 94 03

E-mail : eficad@eficad.com

Web:



EFICAD Web site: <http://eficad.com>



SWOOD Web site: <http://swood.eficad.com/>



EFICAD LinkedIn Page: <https://www.linkedin.com/company/eficad>



EFICAD YouTube Chanel: <https://www.youtube.com/user/SWOODEFICAD>



SOLIDWORKS Web site: <http://www.SOLIDWORKS.fr/sw/products/details.htm?productid=4731>